

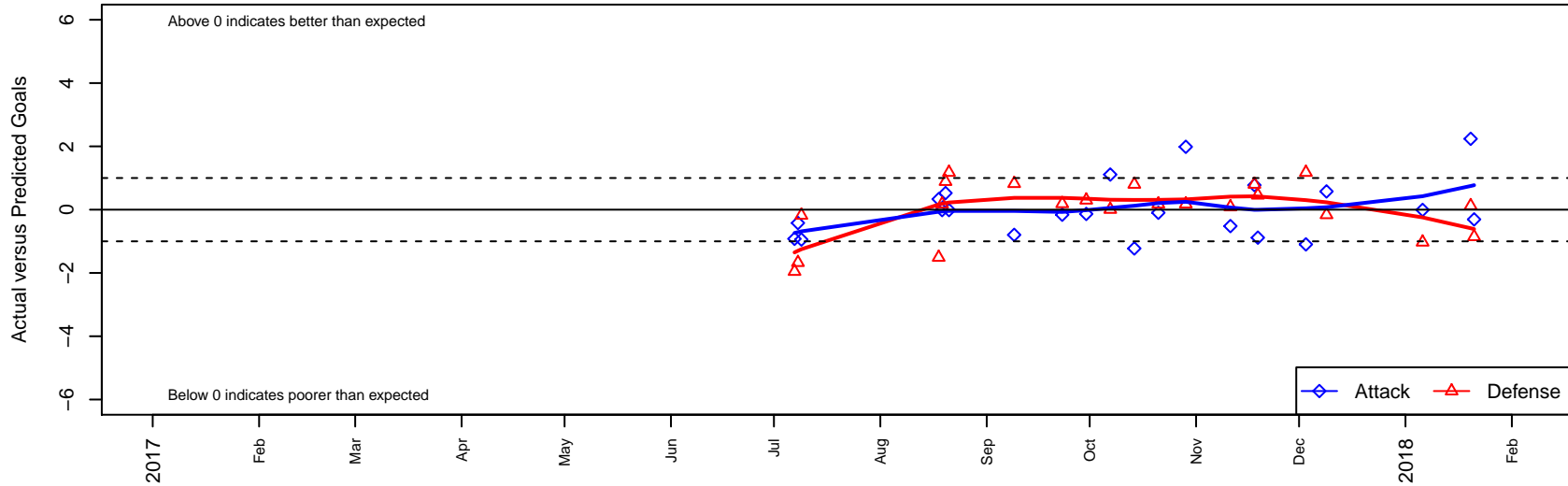
Highline Select G04

Highline Select
 Burien, WA
 G04 total strength=1075
 attack=2.77 defense=2.42
 fall league = NPSL Div 2 (04) U14
 notes= Coronado 2016

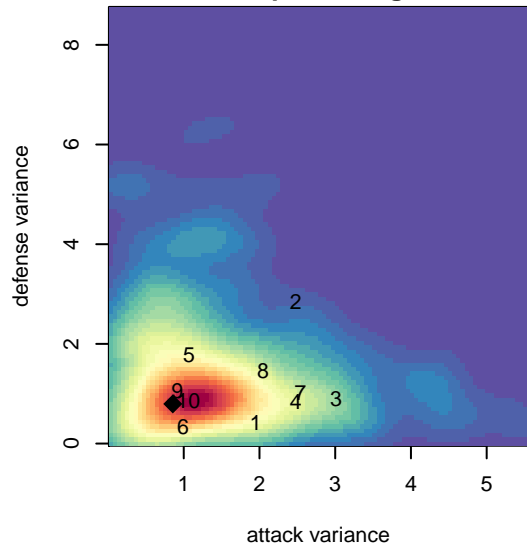
alt names used:
 HIGHLINE HSA SELECT G04 CORONADO (W
 HSA Select G04 Coronado
 HSA Select G04 Coronado
 HSA Select G04 – Coronado

Venues played:
 2017 Seattle Cup GU14
 2017 Bigfoot Silver 2 U14
 2017 NPSL Division 2 (04) U14
 2017 Founders Cup G04 Div A

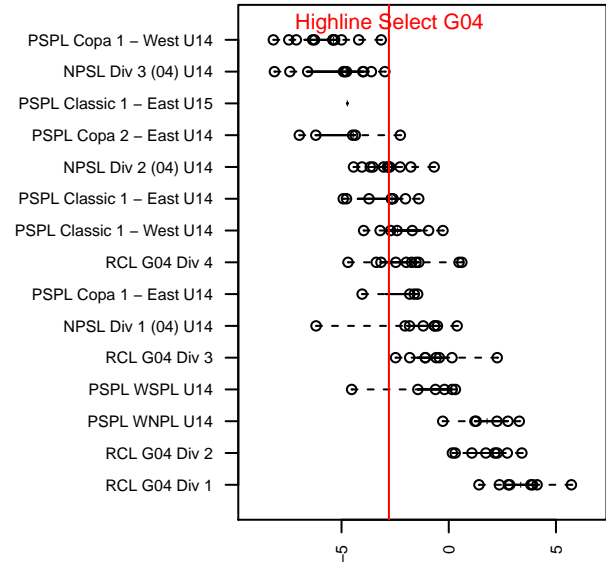
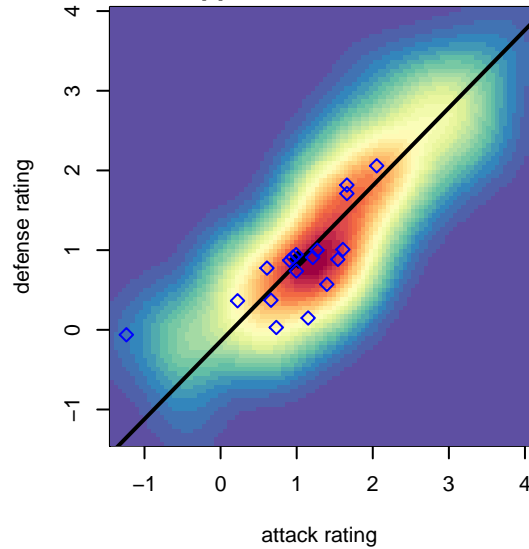
Highline Select G04
 Dots are actual minus expected GF (blue circles) and GA (red triangles).
 Blue line is smoothed change in attack strength. Red is smoothed change in defense strength.



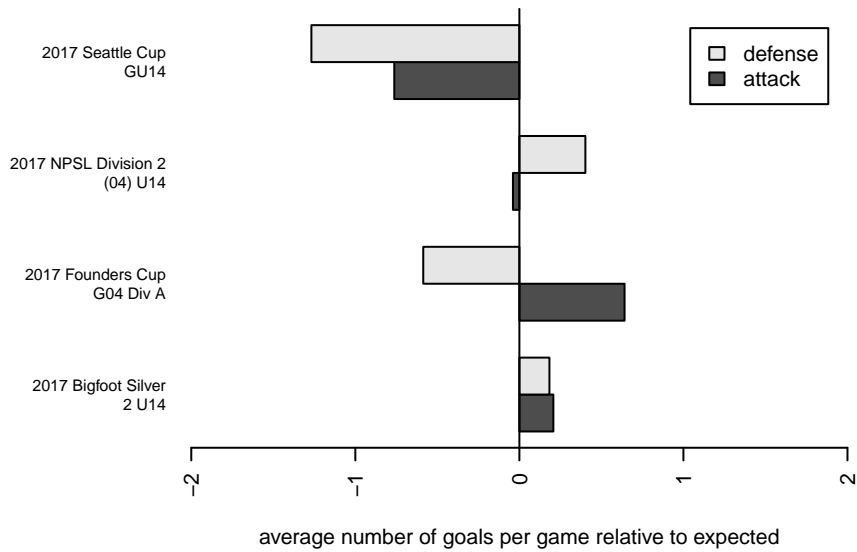
**attack and defense variance (black dot)
relative to other teams
and top 10 in region**



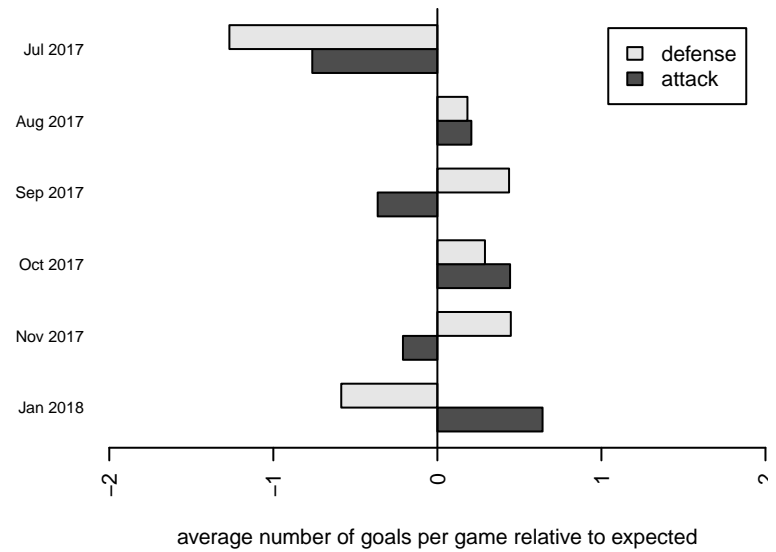
**attack and defense rating
relative to others at age
and all opponents in last 13 months**



Performance relative to 13 month average



Performance relative to 13 month average



| date | home | | away | | venue | pred.home | pred.away |
|-------------|------------------------------|---|-----------------------------------|---|-------------------------------|------------------|------------------|
| 2018-01-21 | NSC Green Dash G04 | 4 | Highline Select G04 | 0 | 2017 Founders Cup G04 Div A | 3.15 | 0.31 |
| 2018-01-20 | Highline Select G04 | 5 | Whatcom FC Rangers White G04 | 0 | 2017 Founders Cup G04 Div A | 2.76 | 0.12 |
| 2018-01-06 | Highline Select G04 | 1 | Mukilteo Rush G04 | 2 | 2017 Founders Cup G04 Div A | 1.01 | 0.97 |
| 2017-12-09 | Highline Select G04 | 3 | Snohomish United Red G04 | 1 | 2017 NPSL Division 2 (04) U14 | 2.42 | 0.84 |
| 2017-12-03 | Seattle United NE Blue G04 | 0 | Highline Select G04 | 0 | 2017 NPSL Division 2 (04) U14 | 1.18 | 1.10 |
| 2017-11-19 | Seattle United S Blue G04 | 1 | Highline Select G04 | 0 | 2017 NPSL Division 2 (04) U14 | 1.46 | 0.88 |
| 2017-11-18 | PSA Force G04 | 0 | Highline Select G04 | 2 | 2017 NPSL Division 2 (04) U14 | 0.80 | 1.23 |
| 2017-11-11 | Highline Select G04 | 0 | UPSC Jays G04 | 2 | 2017 NPSL Division 2 (04) U14 | 0.52 | 2.09 |
| 2017-10-29 | Crossfire Select Bates G04 | 1 | Highline Select G04 | 3 | 2017 NPSL Division 2 (04) U14 | 1.18 | 1.01 |
| 2017-10-21 | Highline Select G04 | 1 | Seattle United NE Blue G04 | 1 | 2017 NPSL Division 2 (04) U14 | 1.10 | 1.18 |
| 2017-10-14 | Highline Select G04 | 0 | PSA Force G04 | 0 | 2017 NPSL Division 2 (04) U14 | 1.23 | 0.80 |
| 2017-10-07 | Harbor Riptide G04 | 2 | Highline Select G04 | 2 | 2017 NPSL Division 2 (04) U14 | 2.01 | 0.89 |
| 2017-09-30 | Highline Select G04 | 2 | Washington United G04 | 1 | 2017 NPSL Division 2 (04) U14 | 2.14 | 1.30 |
| 2017-09-23 | Highline Select G04 | 1 | NSC White Fury G04 | 1 | 2017 NPSL Division 2 (04) U14 | 1.16 | 1.19 |
| 2017-09-09 | Lake Hills Blue Dynamite G04 | 0 | Highline Select G04 | 1 | 2017 NPSL Division 2 (04) U14 | 0.82 | 1.80 |
| 2017-08-21 | Crossfire Select Bates G04 | 0 | Highline Select G04 | 1 | 2017 Bigfoot Silver 2 U14 | 1.18 | 1.01 |
| 2017-08-20 | Highline Select G04 | 2 | NC Alliance FC G04 | 1 | 2017 Bigfoot Silver 2 U14 | 1.48 | 1.89 |
| 2017-08-19 | Highline Select G04 | 1 | Crossfire Select Bates G04 | 1 | 2017 Bigfoot Silver 2 U14 | 1.01 | 1.18 |
| 2017-08-18 | GS Surf C G04 | 2 | Highline Select G04 | 2 | 2017 Bigfoot Silver 2 U14 | 0.49 | 1.67 |
| 2017-07-09 | FWFC White G04 | 2 | Highline Select G04 | 0 | 2017 Seattle Cup GU14 | 1.82 | 0.94 |
| 2017-07-08 | Seattle United W Blue G04 | 4 | Highline Select G04 | 0 | 2017 Seattle Cup GU14 | 2.33 | 0.42 |
| 2017-07-07 | Highline Select G04 | 0 | Seattle United Shoreline Blue G04 | 4 | 2017 Seattle Cup GU14 | 0.92 | 2.05 |